

Wholesale Hosting and Connectivity Service

Cost-effective network co-location solutions

The Wholesale Hosting and Connectivity solution from BCE Global, a Bell Canada company, provides well-conditioned space to house mission critical hardware and applications in major centers across Canada and in select locations in the U.S. As a service or content provider, you can lease secure locking cabinets or caged space, install equipment and interconnect with scalable high-speed Broadband/ Internet bandwidth and network services such as Ethernet, IP VPN and Wavelength.

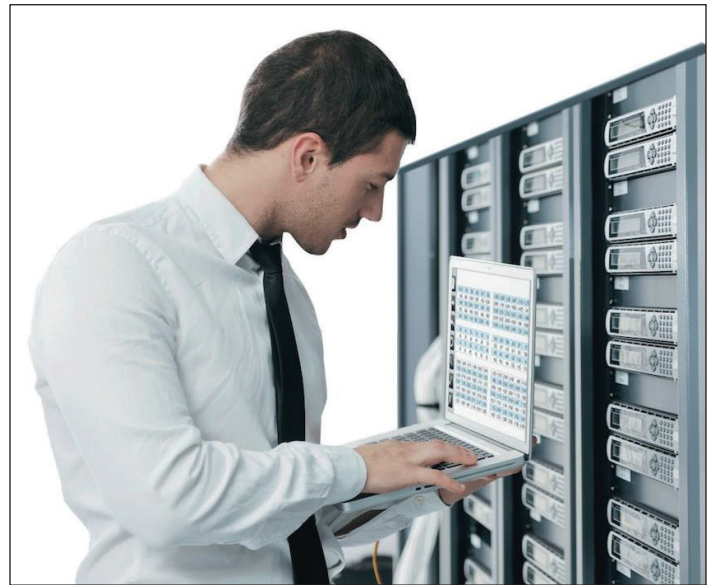
Our co-location facilities offer security and reliability, dual power sources for hardware and robust connectivity. What's more, you can quickly and cost-effectively expand your network reach as well as improve its diversity.

Our solution is designed for service providers who want a cost-effective service to operate hardware and systems from a secure location. Co-location also allows you to expand the reach of your own network and improve its diversity while reducing the up-front capital expenditures.

Features and benefits

Hosting and Connectivity service from BCE Global can help you to:

- Obtain access to leading hosting facilities at a fraction of the cost to build or retrofit an in-house center
- Grow your business by leveraging existing telco-quality space when and where you need it
- Minimize the complexity and cost of compliance with government or industry regulations



- Connect directly to our leading edge network and faster response times and access to the complete suite of BCE Global Wholesale solutions
- Deploy your new service offerings quickly and easily by leveraging our state of the art infrastructure
- Meet your customers needs with our reliable network and 24/7 support

We can extend your network from the U.S. Co-location points below into and across Canada and Points of Presence (PoP) in North America and Europe.

- Albany
- Chicago (3)
- Minneapolis (2)
- Ashburn
- Detroit
- New York (3)
- Buffalo
- London (2)
- Seattle

BCE Global
A BELL CANADA COMPANY

Our standard offer includes:

- Highly secure, state-of-the-art environments
- Space (cabinet, cage)
- Protected power (AC and/or DC)

About BCE Global

BCE Global provides industry-leading broadband, IP and voice wholesale products and services across Canada and at key points in the U.S. and Europe – helping you grow your businesses and meet the needs of your customers.

As part of Canada's largest communications company, Bell Canada, we have access to more than 270,000 kilometers of fiber across the country. Our convenient "meet me" points in the U.S. and Europe provide seamless access to the largest network in Canada.

With an extensive team of professional services experts and 24/7 help desk availability, BCE Global provides high-quality support to interexchange carriers, local exchange carriers, wireless service providers, resellers, Internet service providers, over-the-top providers, system integrators, telcos and cablecos.

For more information, visit bceglobal.net

BCEGlobal
A BELL CANADA COMPANY