

Scalable, dedicated high-performance Internet access

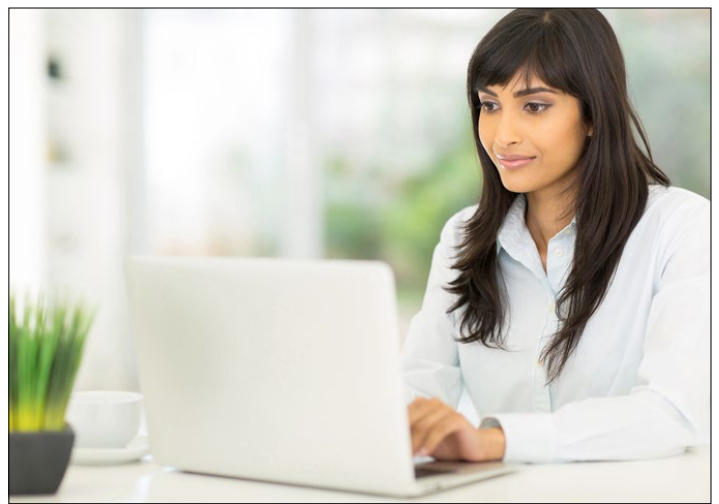
Internet Connect – Dedicated Internet Access service from BCE Global - USA, a Bell Canada company

Meet your customers' needs for high- bandwidth, cost-effective and reliable Internet to support critical applications with Internet Connect – Dedicated Internet Access (IC-DIA) from BCE Global - USA.

By bundling Internet access and transit together, IC-DIA provides a complete solution with the speed and performance your subscribers demand – delivered over Canada's largest fiber optic network.

Benefits of IC-DIA service

- **Performance:** Our robust service level agreements help to maximize availability..
- **Scalability:** With IC-DIA, you get multiple bandwidth and access options to meet evolving customer needs.
- **Reliability and reach:** Our fully redundant, state-of-the-art core and built-in network diversity offers high reliability and connectivity from coast-to-coast-to-coast across Canada.
- **Expert support:** Our highly trained, professional help desk staff and technical support teams are available 24/7 to address your needs.



Key features of IC-DIA from BCE Global - USA

Our IC-DIA service offers flexible, secure and dedicated Internet connectivity. You get:

- Scalable bandwidth at speeds from 1 Mbps to 1 Gbps.
- Dedicated point-to-point access speeds of 10BT, 100BT or GigE Ethernet.
- Easy, insightful web-based usage monitoring and reporting.

About BCE Global - USA

At BCE Global - USA, we empower our partners to do more and reach farther with our world-class network and connectivity solutions. From broadband to voice to professional services, our solutions portfolio can help you connect to your customers from coast-to-coast-to-coast across Canada, and from key points in the U.S. and UK.

Advancing how we connect is a goal we take seriously. This is underscored by industry-leading capital expenditures of our corporate group over the last decade of approximately CA\$4 billion annually, along with plans, announced in February 2021, to expand our broadband fiber and wireless networks rapidly with an incremental acceleration in capital expenditures of at least CA\$1 billion over the next two years.¹

BCE Global - USA boasts access to the largest fiber network in Canada, spanning over 176,000 miles and 160 Points of Presence (PoP) across the country and supporting over 22 million consumer, business and wholesale customer connections.² Our broadband fiber network³ covers approximately 9.9 million homes and businesses in Ontario, Québec, the Atlantic provinces and Manitoba.⁴

BCE Global - USA connects more than just businesses. In 2020, our parent company, Bell Canada, became the first communications company in North America to achieve an ISO 50001 certified energy management system and announced plans to achieve carbon neutral operations starting in 2025.



For more information, visit bceglobal.net

BCE Global – USA
A BELL CANADA COMPANY

(1) The statements relating to our two-year capital expenditure acceleration plans are forward-looking statements and are subject to inherent risks and uncertainties and based on several assumptions which give rise to the possibility that actual results or events could differ materially from our expectations. Refer to BCE Inc.'s 2020 Annual MD&A dated March 4, 2021, as updated in BCE Inc.'s 2021 quarterly MD&As, for further information on such risks, uncertainties and assumptions. (2) Includes Wireless, Internet, Television and Phone services across consumer, business and wholesale lines of business. (3) Consisting of fiber-to-the-premise (FTTP) and fiber-to-the-node (FTTN) locations. (4) As of December 31, 2020.