

Powerful Law Enforcement Response.

BCE Global Public Safety Computer-Aided Dispatch for Law Enforcement

Faster response and better communication help first responders get up to speed before they get on scene.

BCE Global Public Safety Computer-Aided Dispatch (CAD) ensures that officers have access to the mission-critical information needed to do their jobs safely and effectively, regardless of their location. Resources are deployed correctly where and when they are needed the most, and receive essential information en route.



Benefits of BCE Global Public Safety CAD for Law Enforcement



Fast, efficient dispatching

Dispatchers can assume responsibility for any portion of the geographic service region and can quickly change assignments as required. Incoming incidents are continuously prioritized and color-coded for easy recognition.



Improved Response Time

Automatic address verification, real-time unit geo-location and dynamic unit recommendations enhance resource allocation and remove the guesswork from the dispatch process.



Improved Communication

Our users have immediate access to situational awareness and other relevant information including alerts and procedures, allowing officers to make the best possible decisions under pressure.



Responder Safety

Through continuous status updates and emergency signals from units fitted with mobile/wireless devices and data-transmitting radio-equipment dispatchers (and mobile equipped units) can see resource location at a glance and are immediately alerted by high priority signals.

More efficient communications to improve end-to-end information flow

BCE Global Public Safety CAD is a comprehensive solution that supports electronic information flow for urban and regional law enforcement agencies. It streamlines and automates information from initial call for service to dispatch, scene management and passing to records management.

Our solution supports one-time data entry and reduces the potential for error. Incident forms are pre-filled with E911/NG911 data as soon as a call comes in. If multiple calls are received on the same incident, duplicate information can be automatically merged. Agencies can configure specialized dispatch recommendations by call type/ location.

Key features of BCE Global Public Safety CAD for Law Enforcement



Integration with external systems

BCE Global Public Safety CAD offers full integration with crime information systems (NCIC, NLETS, CPIC), motor vehicle registration databases, and Record Management Systems (RMS).



Resource directory

Offers quick, intuitive access to lookup information including personnel, resources, information categories, common place names and standard operating procedures.



Instant messaging

Two-way messaging between dispatchers and officers reduces voice-radio traffic and allows more effective communication.



Supervisory review

The road supervisor or manager can access real-time Situational Awareness for active/ assigned incidents and resource disposition. Comprehensive reporting is available for benchmark performance and other agency statistics.



End-to-end security

Your confidential, mission-critical data is protected with MS-CAPI AES 256-bit (FIPS 140-1) encryption along with Active Directory and Entrust two-factor authentication protocols.

Why BCE Global?

For over 30 years, public safety and emergency service agencies have relied on BCE Global to provide the secure communications systems they depend on daily. Our Public Safety Group – a team of expert software developers, database administrators, GIS specialists, Support staff and more – has implemented computer-aided dispatch systems and mobile solutions at customer sites across North America. With 24/7 access to the BCE Global support team, your field and emergency service personnel know they will be able to respond quickly, accurately and safely to any event.

For more information about BCE Global Public Safety CAD for Multi-Agency, please contact your BCE Global representative, email publicsafetygroup@bcenexxia.com, or visit www.bceglobal.net/public-safety.

Ready to Respond

BCE Global Public Safety CAD Mobile

Emergency personnel must respond quickly to calls for service, while ensuring maximum safety for all concerned. Responders must understand each situation before their arrival on scene and, once there, get the job done without impediments. The BCE Global Public Safety CAD Mobile offers:

- Quick, reliable transmission of dispatch information, alerts and procedures
- Integrated GPS, Mapping and Travel Routing
- Seamless interaction with the Dispatch System, and
- Continuously updated Situational Awareness

The BCE Global Public Safety CAD Mobile ensures that field personnel have access to the mission-critical information and the functionality needed to do their jobs safely and effectively, while simultaneously keeping dispatchers and supervisors informed of their location and status.



Benefits of BCE Global Public Safety CAD Mobile



Tri-Service interoperability

Deployable for Law Enforcement, Fire and/or EMS, single or multiple agencies/ jurisdictions; a plug-in architecture supports the packaging of relevant work modules. Promotes co-ordinated response to emergencies by allowing services/departments to monitor each other's activity as permitted.



Responder safety

Responder safety is the highest priority, with continuously updated Situational Awareness; Duress Signal; GPS/AVL integration; Travel Routing; and automatic display of Alerts/Operating Procedures related to each dispatch.



Seamless integration

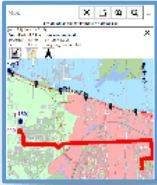
Integration capability with CAD systems including, but not limited to, the BCE Global Public Safety CAD, enables two-way integration includes Status Update, Messaging, electronic Dispatches, Situational Awareness display based on CAD data, and Data Queries.



Leading edge technology & security

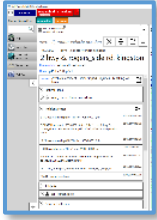
Operating on laptop or tablet, a flexible user interface allows the user to open multiple tab views and re-position them as required; mobile units can be provisioned/ updated remotely, reducing deployment issues in large and geographically distributed sites.

Key features of BCE Global Public Safety CAD Mobile



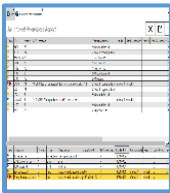
Integrated mapping & routing

Mobile maps are based on local GIS data including specialty layers when available. Mobile users can view the location of their own and other units, and request travel routes as required. A travel route is automatically generated when responding to a dispatch.



Efficient communication

As new information is received, electronic dispatches are automatically refreshed and include alerts, hazards and SOP's when applicable. One-touch Status Updates, Messaging, Query and Incident Notes features allow the mobile user to interact with assigned incidents and the dispatch system; support silent communication when preferred; reduce busy radio traffic and communications center workload; and keep the responder informed prior to arrival on scene.



Situational awareness

Provides responders and field supervisors with the “bigger picture” at all times by monitoring active resources and calls for service in requested services/areas. The Situational Awareness display refreshes dynamically. The user's monitoring preferences are saved automatically between login sessions.



End-to-end security

Protect your confidential, mission-critical data with FIPS compliant AES256 encrypted data transfers accessed through Active Directory and Two-Factor Authentication protocols.

Why BCE Global?

For over 30 years, public safety and emergency service agencies have relied on BCE Global to provide the secure communications systems they depend on daily. Our Public Safety Group – a team of experts including software developers, database administrators, GIS/Domain specialists, Support staff and more – has implemented computer-aided dispatch systems and mobile solutions at customer sites across North America. With 24/7 access to the BCE Global support team, your personnel know they will be able to respond quickly, accurately and safely to any event.

For more information about BCE Global Public Safety CAD Mobile, please contact your BCE Global representative, email publicsafetygroup@bcenexxia.com, or visit www.bceglobal.net/public-safety.